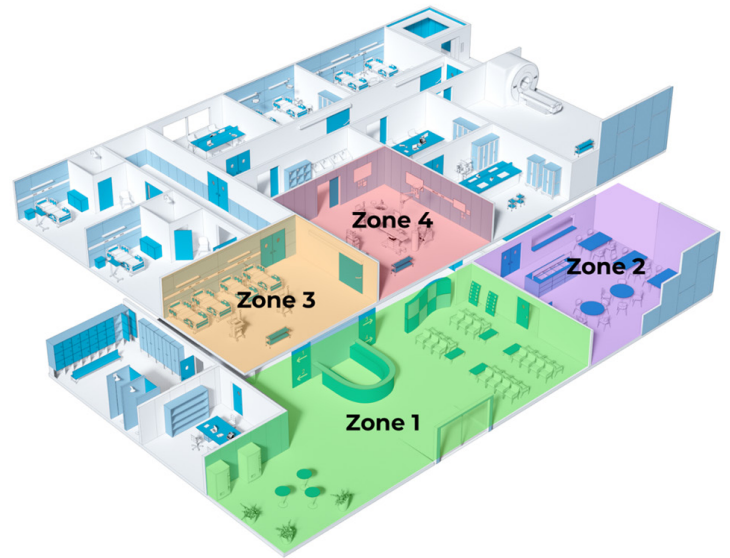




When designing spaces for healthcare, being strategic and smart matters. At Wilsonart, we've identified four distinct Disinfection Zones prone to infectious risk. Using rigorous internal test codes, ISO compliance, BIFMA standards, CDC recommendations, and our Cleaning & Disinfection Guidelines as a baseline, Wilsonart's Disinfection Zones define the ideal surface applications for creating high-functioning, long-lasting spaces.



Area Classification According to Infectious Risk.

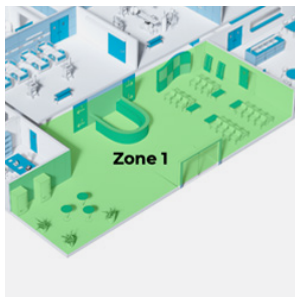
<p>1 ZONE 1 PUBLIC SPACES: LOW RISK</p> <p> Daily cleaning with household cleaners.</p> <ul style="list-style-type: none"> • Administrative Offices • Public Bathrooms • Consultation Rooms • Cafeteria • Elevators • Hallways • Lobbies • Meeting Rooms • Waiting Areas 	<p>2 ZONE 2 STAFF SPACES: MEDIUM RISK</p> <p> Cleaning and disinfecting multiple times per day with household or commercial cleaners.</p> <ul style="list-style-type: none"> • Activity Rooms • Bathrooms • Break Rooms • Changing Rooms/ Locker Rooms • Pharmacy • Rehabilitation Spaces • Stairs • Staff Rooms • Storage Rooms (linen, waste, etc.) 	<p>3 ZONE 3 PATIENT SPACES: HIGH RISK</p> <p> Cleaning and disinfecting several times per day and even more frequently for high-touch areas using commercial cleaners.</p> <ul style="list-style-type: none"> • Delivery Rooms • Emergency Rooms • Examination Rooms • Laboratories (Staff Only) • Maternity Wards • Medical Imaging Spaces • Nursery • Oncology – Hematology • Outpatient Spaces • Patient Room • Recovery Spaces • Treatment Rooms 	<p>4 ZONE 4 PROCEDURE SPACES: VERY HIGH RISK</p> <p> Constant cleaning, disinfecting, and sterilizing several times per day with commercial cleaners and protocols.</p> <ul style="list-style-type: none"> • Burn Units • Hematology • Hospital Rooms - Treatment • Intensive Care Unit (ICU) • Neonatal Intensive Care Unit (NICU) • Oncology Rooms • Operating Rooms (Major) • Procedure Rooms (Minor) • Terminal Clean Room • Transplants
--	---	---	---



Product Classification According to Infectious Risk.

1 PUBLIC SPACES: LOW RISK ZONE 1

- Compact Laminate (SPC)
- Coordinated Surfaces (CS)
- Digital Print Laminate
- High Pressure Laminate (HPL)
 - HPL with AEON™ Enhanced Performance Technology and Antimicrobial Protection
- Quartz (QTZ)
- Solid Surface (SS)
- Thermally Fused Laminate (TFL)
- THINSCAPE® Performance Tops
- Traceless™ Laminate
- Wetwall



2 STAFF SPACES: MEDIUM RISK ZONE 2

- Chemsurf (Labs)
- Compact Laminate (SPC)
- Coordinated Surfaces (CS)
- Digital Print Laminate
- High Pressure Laminate (HPL)
 - HPL with AEON™ Enhanced Performance Technology and Antimicrobial Protection
- Solid Surface (SS)
- Thermoformed Laminate (TFL)
- Traceless™ Laminate
- Quartz (QTZ)



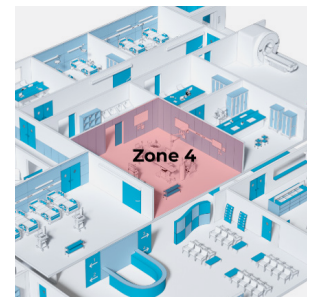
3 PATIENT SPACES: HIGH RISK ZONE 3

- Compact Laminate (SPC)
- Coordinated Surfaces (CS)
- Digital Print Laminate
- High Pressure Laminate (HPL)
 - HPL with AEON™ Enhanced Performance Technology and Antimicrobial Protection
- Solid Surface (SS)



4 PROCEDURE SPACES: VERY HIGH RISK ZONE 4

- Compact Laminate (SPC)
- High Pressure Laminate for vertical surfaces (HPL)
 - HPL with AEON™ Enhanced Performance Technology and Antimicrobial Protection
- Solid Surface (SS)



Let's make healthcare safer, cleaner, better.

[WILSONART DISINFECTION ZONES WEBPAGE](#)

[ANTIMICROBIAL PROTECTION PRODUCT SHEET](#)

[CLEANERS & DISINFECTANTS](#)

[CARE & MAINTENANCE INSTRUCTIONS](#)

[SURFACE MAINTENANCE FAQs](#)

[CDC CLEANING & DISINFECTION GUIDELINES](#)

[DISINFECTANTS FOR USE AGAINST SARS-COV-2 \(COVID-19\)](#)

Wilsonart®
ENGINEERED SURFACES